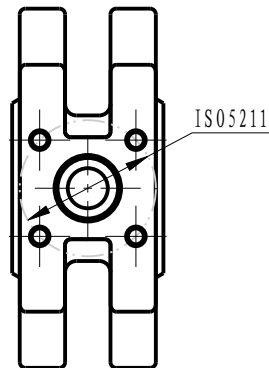
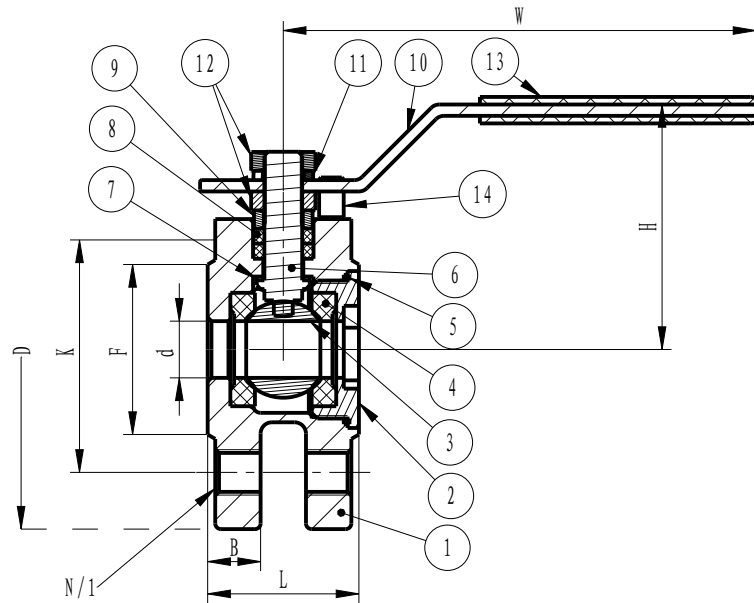


1-Teiliger Kugelhahn | Voller Durchgang | Wafer Type | Flansch Anschluss



| ITEM | PARTS         | Q'TY | MATERIAL       |
|------|---------------|------|----------------|
| 1    | BODY          | 1    | ASTM-A351-CF8M |
| 2    | INSERT        | 1    | ASTM-A351-CF8M |
| 3    | BALL          | 1    | ASTM-A351-CF8M |
| 4    | BALL SEAT     | 2    | PTFE           |
| 5    | JOINT GASKET  | 1    | PTFE           |
| 6    | STEM          | 1    | AISI316        |
| 7    | THRUST WASHER | 1    | PTFE           |
| 8    | STEM PACKING  | 2    | PTFE           |
| 9    | HIGH WASHER   | 1    | AISI304        |
| 10   | HANDLE        | 1    | AISI304        |
| 11   | SPRING WASHER | 1    | AISI304        |
| 12   | STEM NUT      | 2    | AISI304        |
| 13   | PALSTIC COVER | 1    | PLASTIC        |
| 14   | STOP PIN      | 1    | AISI304        |

Flanschanschluss PN 16

Abmessungen

| SIZE DN | d   | L    | D   | K   | F   | B  | W   | H   | N/1   | ISO 5211 |
|---------|-----|------|-----|-----|-----|----|-----|-----|-------|----------|
| 15      | 15  | 40   | 95  | 65  | 45  | 14 | 125 | 63  | 4-M12 | F03      |
| 20      | 20  | 44   | 105 | 75  | 58  | 16 | 125 | 68  | 4-M12 | F03      |
| 25      | 25  | 53   | 115 | 85  | 68  | 16 | 160 | 81  | 4-M12 | F04      |
| 32      | 32  | 58.4 | 140 | 100 | 78  | 16 | 160 | 87  | 4-M16 | F04      |
| 40      | 38  | 62   | 150 | 110 | 88  | 16 | 200 | 98  | 4-M16 | F05      |
| 50      | 50  | 72   | 165 | 125 | 102 | 18 | 200 | 105 | 4-M16 | F05      |
| 65      | 65  | 94   | 185 | 145 | 122 | 18 | 250 | 121 | 4-M16 | F07      |
| 80      | 76  | 118  | 200 | 160 | 138 | 20 | 285 | 153 | 8-M16 | F07      |
| 100     | 100 | 140  | 220 | 180 | 158 | 20 | 338 | 164 | 8-M16 | F07      |