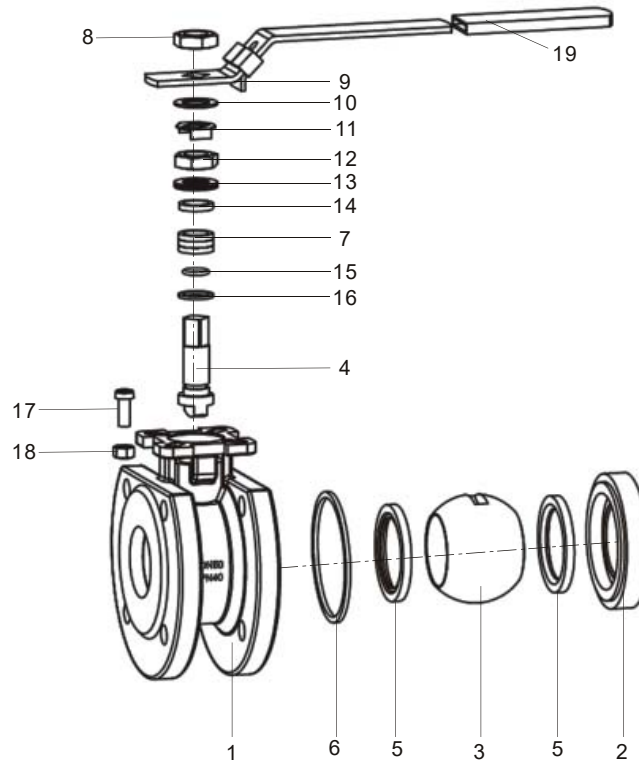


Zwischenflansch Kugelhahn / Wafer Type | Flanschanschluss EN 1092-1
 DIN PN 16
 DIN DN 15 - 150



No.	Parts Name	Material		
1	Body	1.0619	1.4308	1.4408
2	Cap	1.0619	1.4308	1.4408
3	Ball	A182-F304	A182-F304	A182-F316
4	Stem	A276-410	A276-304	A276-316
5	Seat	PTFE / PTFE+15%GF / PTFE+15%CF / TFM1600		
6	gasket	PTFE / RPTFE		
7	Packing	PTFE / RPTFE		
8	Thin nut	304	304	304
9	Lock handle	304	304	304
10	Washer	304	304	304
11	Check washer	304	304	304
12	Thin nut	304	304	304
13	Disc spring	SS301	SS301	SS301
14	Gland	304	304	316
15	O-ring	Viton(FKM)	Viton(FKM)	Viton(FKM)
16	Thrust washer	PTFE/RPTFE	PTFE/RPTFE	PTFE/RPTFE
17	Screw	A193-B7	304	304
18	Nut	A194-2H	304	304
19	Handle cover	PVC	PVC	PVC

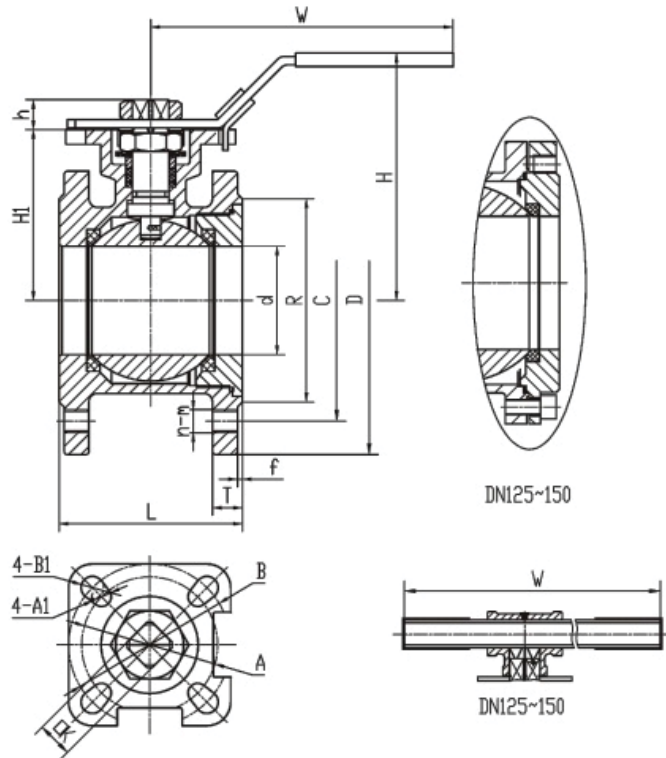
Zwischenflansch Kugelhahn / Wafer Type | Flanschanschluss EN 1092-1
DIN PN 16
DIN DN 15 - 150

Design features

1. Wafer type
2. Stem O-ring + packing multiple seal.
3. Dynamic load pressure stem packing.
4. Blow-out proof stem.
5. Anti-static structure.
6. ISO 5211 standard actuator mounting pad.

Standard specification

1. Design: DIN 3357-2 EN 12516-1
2. Face to Face: MFR STD
3. Flange End: EN 1092-1
4. Inspection: EN 12266-1



PN16																		
DN	Dimension				Flange dimension						Top connection size							
	d	L	H	W	D	C	R	T	f	n-m	ISO 5211	A	B	A1	B1	K	h	H1
15	15	42	81	141	95	65	45	9	2	4-M12	F03/F04	36	42	6	6	9	9	48
20	20	44	86	141	105	75	58	9	2	4-M12	F03/F04	36	42	6	6	9	9	53
25	25	50	99	162	115	85	68	9	2	4-M12	F04/F05	42	50	6	7	11	11	62
32	32	60	109	162	140	100	78	12	2	4-M16	F04/F05	42	50	6	7	11	11	72
40	38	65	117	188	150	110	88	13	3	4-M16	F05/F07	50	70	7	9	14	14	78
50	50	80	125	188	165	125	102	20	3	4-M16	F05/F07	50	70	7	9	14	14	86
65	65	110	150	233	185	145	122	18	3	4-M16	F07/F10	70	102	9	11	17	17	103
80	76	120	158	233	200	160	138	20	3	8-M16	F07/F10	70	102	9	11	17	17	112
100	89	150	193	318	220	180	158	20	3	8-M16	F10	-	102	-	11	22	22	140
125	118	180	268	800	250	210	162	22	3	8-M16	F12	-	125	-	14	27	30	180
150	142	225	285	800	285	240	188	22	3	8-M16	F12	-	125	-	14	27	30	198